



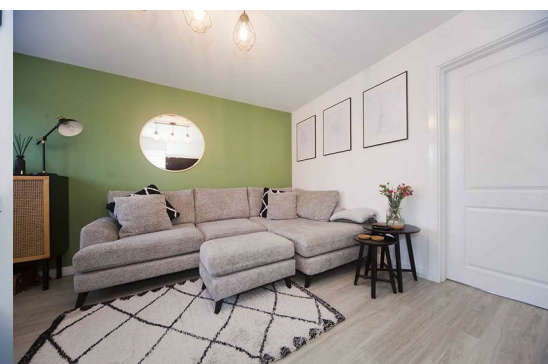
9 Woodhouse Lane

, Hartlepool, TS26 0XX

£259,950



Igomove take enormous pleasure in presenting to the market this fantastic three bedroomed detached residence located in a highly desirable area, it provides a host of desirable elements which include; three superb bedrooms (master with en suite facilities), excellent family bathroom, open concept kitchen diner, lovely lounge, guest cloakroom, garage, double driveway, gardens (rear is South West facing), Upvc double glazing, gas central hearing, modern decor, fitted blinds, freehold.



Attractive facade, lawned garden, block paved two car driveway to garage, front door into;

Entrance vestibule.

Delightful lounge with front elevation window, contemporary decor, laminate flooring.

Inner lobby with turned stairs to the first floor.

Guest cloakroom comprising close coupled WC and pedestal wash basin, half tiled walls.

Rear aspect open plan kitchen diner fitted with an array of shaker style larder, wall, base and drawer cabinets, complimentary surfaces, integrated oven, integrated gas hob, integrated stainless extractor, integrated washing machine, integrated fridge freezer, integrated dishwasher, sink with mixer tap, recessed spotlights, tiled floor, ample space to dine, feature bespoke half panelled wall, fitted storage cupboard, French doors opening to the rear garden.

To the first floor landing there is a fitted storage cupboard.

Master double bedroom situated to the rear with modern decor and access to;

En suite shower room comprising oversized shower enclosure, close coupled WC and pedestal wash basin, superb tiling.

Bedroom two is a front aspect double, immaculate decor, laminate flooring.

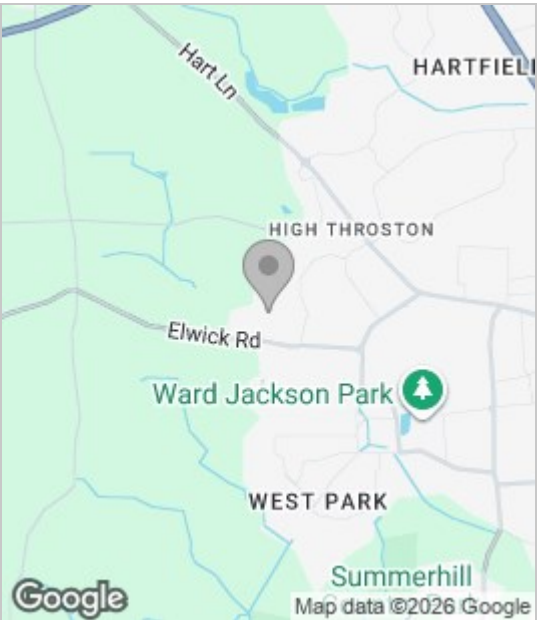
Bedroom three is another well proportioned room located to the front of the property, pristine decor.

The family bathroom comprises bath, close crippled WC and pedestal wash basin, delightful tiling.

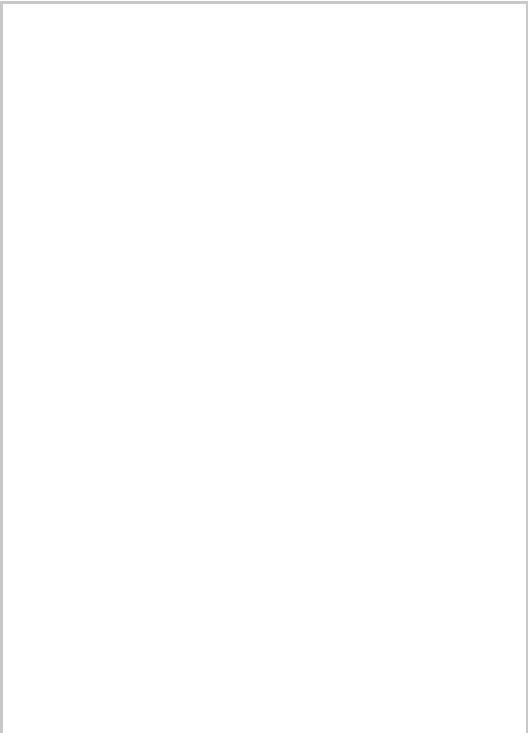
To the rear is an enclosed South Westerly aspect garden laid to lawn with Indian stone patio areas and planted borders.

Situated in a prestigious location, this delightful property can be viewed by contacting us at Igomove at your earliest convenience.

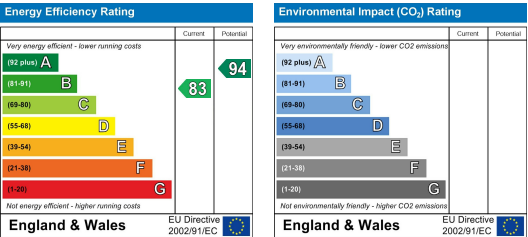
Area Map



Floor Plan



Energy Efficiency Graph



These particulars, whilst believed to be accurate are set out as a general outline only for guidance and do not constitute any part of an offer or contract. Intending purchasers should not rely on them as statements of representation of fact, but must satisfy themselves by inspection or otherwise as to their accuracy. No person in this firm's employment has the authority to make or give any representation or warranty in respect of the property.